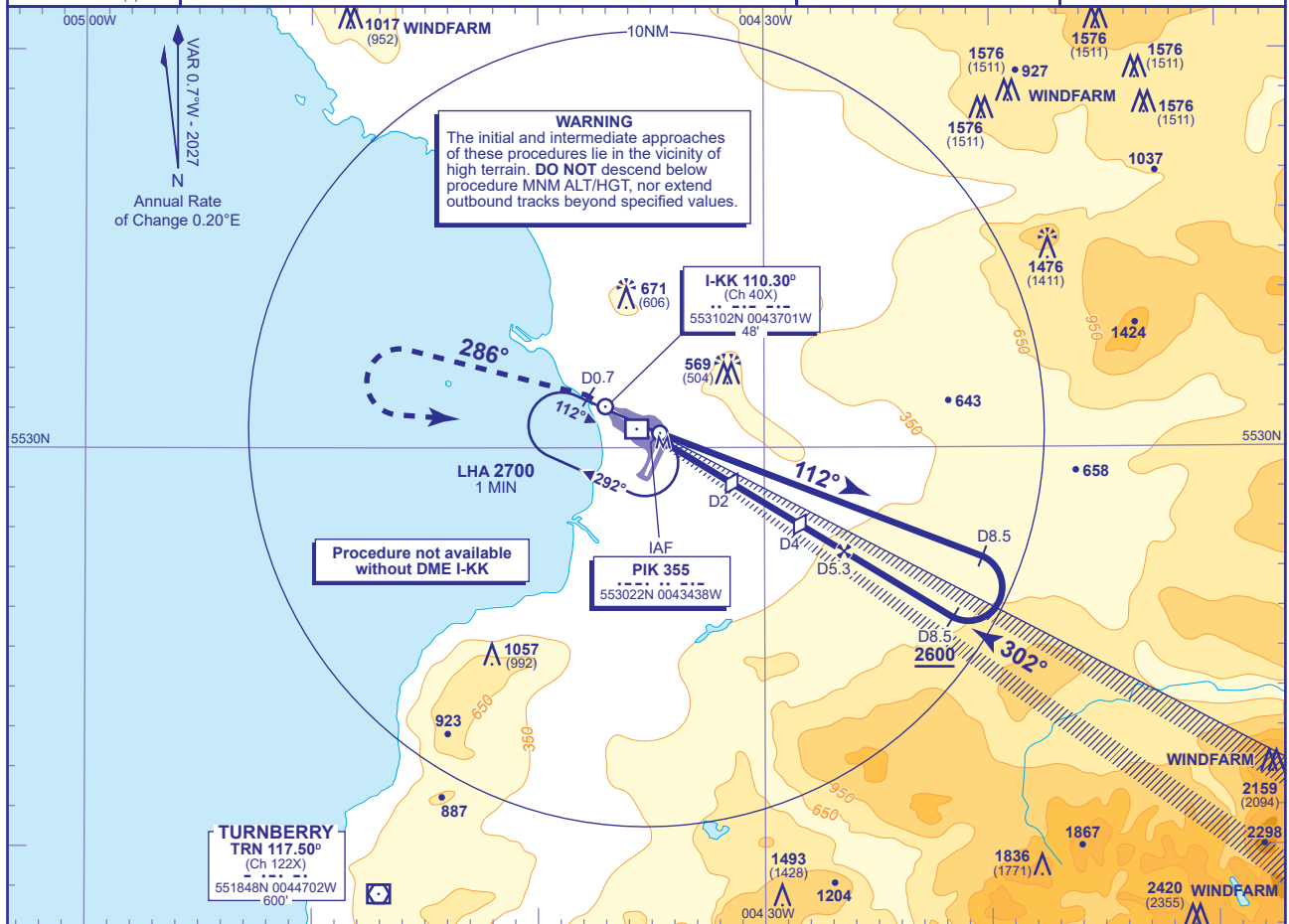
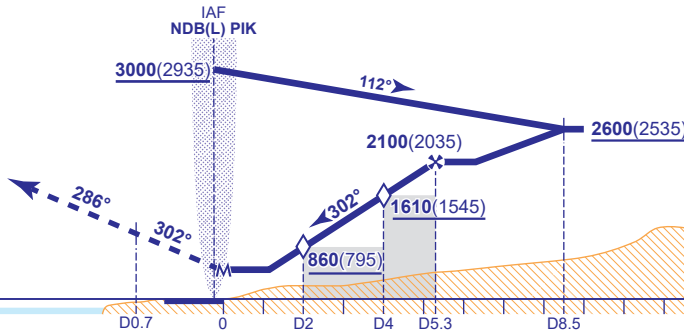


TRANSITION ALTITUDE  
**6000**



DME I-KK	5	4 (SDF)	3	2 (SDF)
ALT(HGT)	1990(1925)	1610(1545)	1240(1175)	860(795)

Continuous climb to **3000**. Initially, straight ahead to **I-KK D0.7** outbound, then climbing turn left onto track **286°** continuing climb to **2500**, then climbing turn left to **NDB(L) PIK** to hold at **3000** or as directed.



**DME I-KK zero ranged to THR RWY 30**

Aircraft Category		A	B	Rate of descent	G/S KT	160	140	120	100	80
OCA (OCH)	Procedure	540(475)	540(475)		FT/MIN	1000	870	750	620	500
VM(C)OCA (OCH AAL)	Total Area	800(735)	900(835)							
	SW of RWY 12/30	640(575)	710(645)							

**NOTE** Procedure only available with prior approval from ATC.

**CHANGE (12/25):** NE MSA. MAG VAR. MAG HEADINGS.